

# .118"(3.00mm) pitch Dual Row Thru Hole Header



## W3045XP Series

- \* Poles: 2-24
- \* Material: Insulator: PA9T or HTN or LCP BLACK
- \* Contact: 0.64mm Square Pin, Brass Tin plated
- \* Mates with CH3025-XX series Housing

## Specifications

- \* Current rating: 5A AC, DC
- \* Voltage rating: 250V AC, DC
- \* Temperature range: -40°C~+105°C
- \* Insulation resistance: 1,000MΩ min.
- \* Withstand voltage: 1500V AC/minute

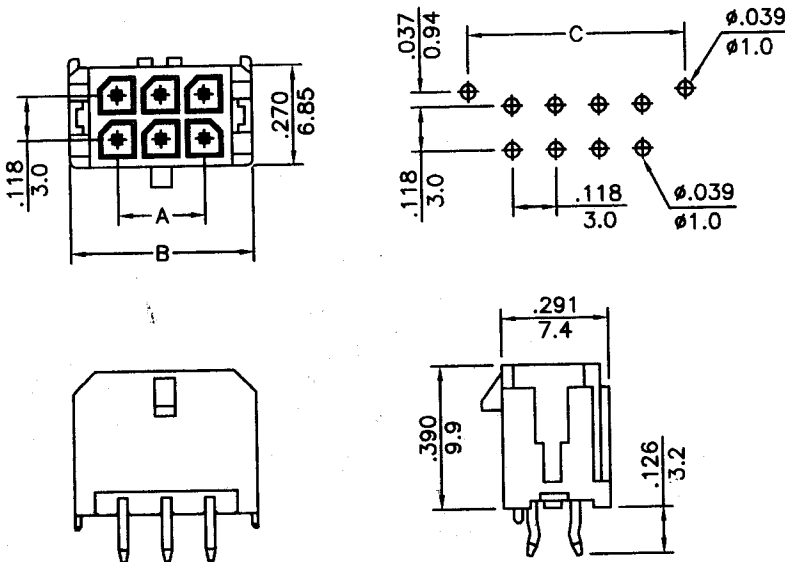
## ORDERING CODE

W3045XP-2x12 T  
 1                      2                      3

1. SERIES NO.
2. NO. OF CIRCUIT: 2x1~2x12
3. CONTACT PLATED:  
T=TIN OVER NICKEL

P/N: W3045SP 2xXXT

### P.C.B LAYOUT



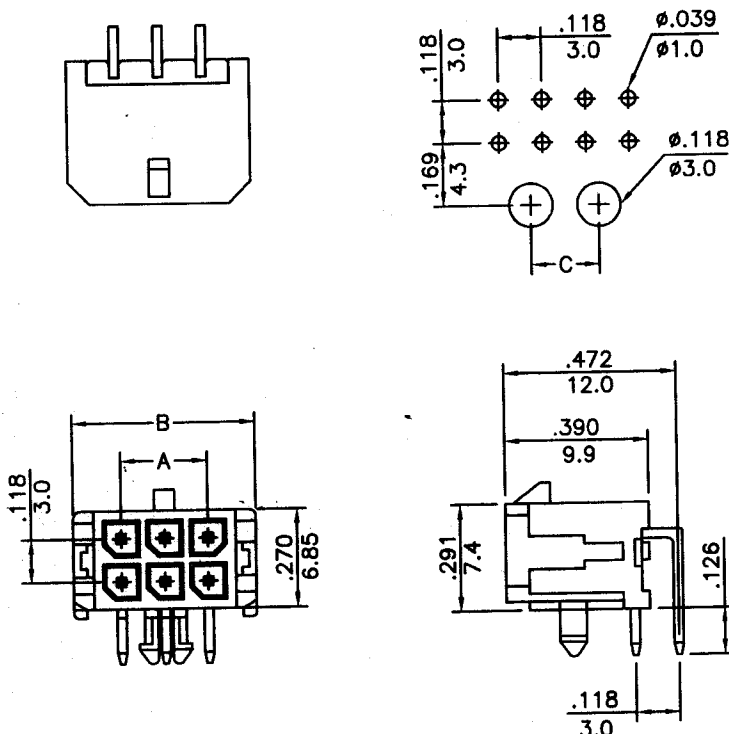
### TOLERLANCE:

- 2 ~ 8P A±0.15, B±0.20
- 10~16P A±0.25, B±0.25
- 18~24P A±0.35, B±0.30

CKTS	DIM. "A"	DIM. "B"	DIM. "C"
2		(0.262)6.65	(0.236)6.0
4	(0.118)3.00	(0.380)9.65	(0.354)9.0
6	(0.236)6.00	(0.498)12.65	(0.472)12.0
8	(0.354)9.00	(0.616)15.65	(0.591)15.0
10	(0.472)12.00	(0.734)18.65	(0.709)18.0
12	(0.591)15.00	(0.852)21.65	(0.827)21.0
14	(0.709)18.00	(0.965)24.65	(0.945)24.0
16	(0.827)21.00	(1.090)27.70	(1.063)27.0
18	(0.945)24.00	(1.209)30.70	(1.181)30.0
20	(1.063)27.00	(1.327)33.70	(1.299)33.0
22	(1.181)30.00	(1.445)36.70	(1.417)36.0
24	(1.299)33.00	(1.563)39.70	(1.535)39.0

P/N: W3045RP 2xXXT

### P.C.B LAYOUT



### TOLERLANCE:

- 2 ~ 8P A±0.15, B±0.20
- 10~16P A±0.25, B±0.30
- 18~24P A±0.35, B±0.40

CKTS	DIM. "A"	DIM. "B"	DIM. "C"
2		(0.262)6.65	
4	(0.118)3.00	(0.380)9.65	
6	(0.236)6.00	(0.498)12.65	
8	(0.354)9.00	(0.616)15.65	(0.185)4.7
10	(0.472)12.00	(0.734)18.65	(0.303)7.7
12	(0.591)15.00	(0.852)21.65	(0.421)10.7
14	(0.709)18.00	(0.965)24.65	(0.539)13.7
16	(0.827)21.00	(1.090)27.70	(0.657)16.7
18	(0.945)24.00	(1.209)30.70	(0.776)19.7
20	(1.063)27.00	(1.327)33.70	(0.894)22.7
22	(1.181)30.00	(1.445)36.70	(1.012)25.7
24	(1.299)33.00	(1.563)39.70	(1.130)28.7