

.118"(3.00mm) pitch SMD Headers Connector



W3015 SMD Series

- * Poles: 2-12
- * Material: Insulator: High Temp Polyester ULV-0 BLACK
- * Contact: Brass Tin plated
- * Mates with CH3025S-XX series Housing

Specifications

- * Current rating: 5A AC, DC
- * Voltage rating: 250V AC, DC
- * Temperature range: -40°C~+105°C
- * Insulation resistance: 1,000MΩ min.
- * Withstand voltage: 1500V AC/minute

inches
mm

ORDERING CODE

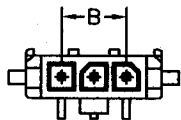
W3015XT-03 N T R
1 2 3 4 5

1. SERIES NO. SMT TYPE
2. NO. OF CIRCUIT 2~12
3. OTHER OPTIONS
N= SURFACE MOUNT WITH NAIL
C2= WITH CLIP 2.0, C3= WITH CLIP 3.2
4. CONTACT PLATED
T= TIN OVER NICKEL
5. PACKAGING
R= TAP&REEL

P/N: W3015ST-XXNTR

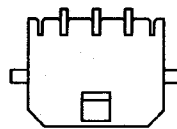
SMD WITH FITTING NAIL

(NO. OF CONTACTS-1)x3.0

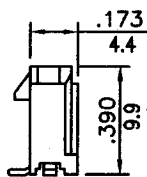
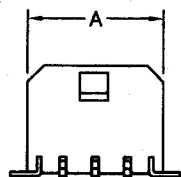


P/N: W3015RT-XXNTR

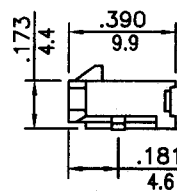
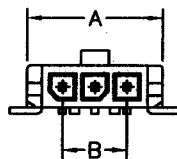
SMD WITH FITTING NAIL



(NO. OF CONTACTS)x3.0+3.7

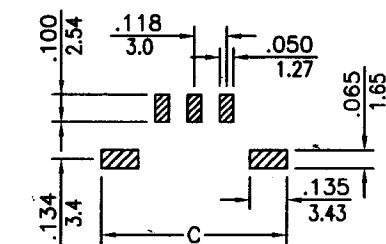


(NO. OF CONTACTS)x3.0+3.7



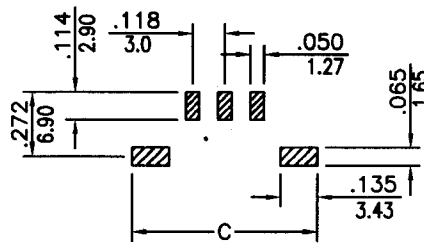
(NO. OF CONTACTS-1)x3.0

P.C.B LAYOUT



(NO. OF CONTACTS)x3.0+8.2

P.C.B LAYOUT



(NO. OF CONTACTS)x3.0+8.2