

.079"(2.00mm) pitch dual row Box Header

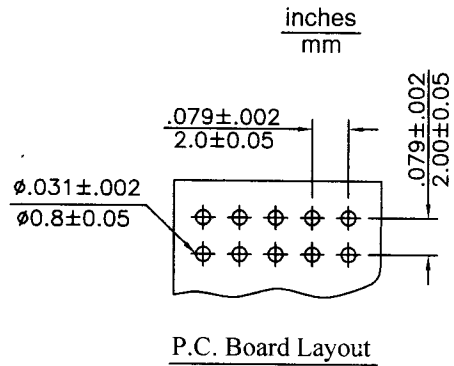


CW2008 Series

- * Poles: 2X3~2X34
- * Material: Insulator: NYLON 6T UL94V-0 BLACK
- * Contact: 0.50mm(.020") square pin, brass, gold plated
- * Mates with 2.0 IDC, CH204C-XX series housing

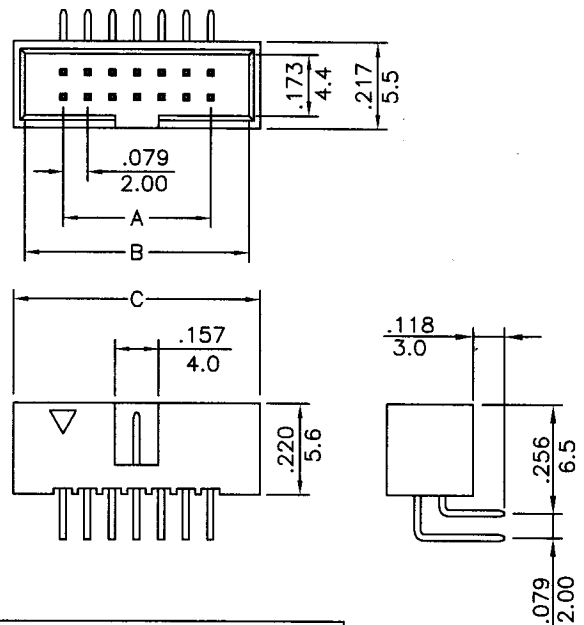
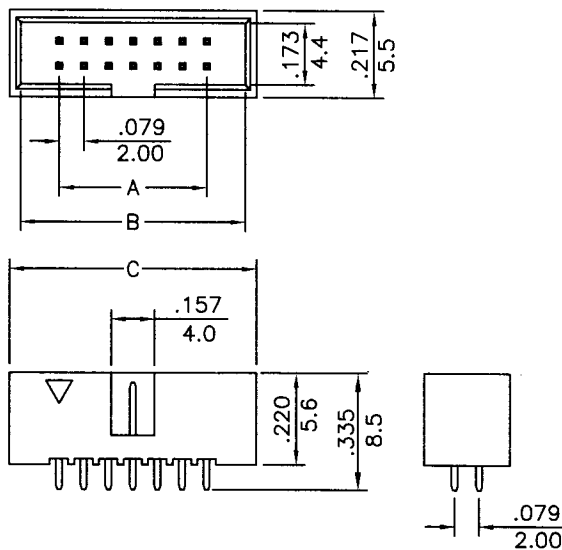
Specifications

- * Current rating: 1A AC, DC
- * Voltage rating: 250V AC, DC
- * Temperature range: -40°C~+105°C
- * Insulation resistance: 5,000MΩ min.
- * Withstand voltage: 800 AC/minute
- * Applicable PC board thickness: .063" (1.6mm)



P/N: CW2008S-2xXX

P/N: CW2008R-2xXX



CIRCUITS	PART NO.	DIMENSION in.(mm)		
		A	B	C
6	CW2008X-2X3	0.157(4.00)	0.476(12.10)	0.520(13.20)
8	CW2008X-2X4	0.236(6.00)	0.555(14.10)	0.598(15.20)
10	CW2008X-2X5	0.315(8.00)	0.634(16.10)	0.677(17.20)
12	CW2008X-2X6	0.394(10.00)	0.713(18.10)	0.756(19.20)
14	CW2008X-2X7	0.472(12.00)	0.791(20.10)	0.835(21.20)
16	CW2008X-2X8	0.551(14.00)	0.870(22.10)	0.913(23.20)
18	CW2008X-2X9	0.630(16.00)	0.949(24.10)	0.992(25.20)
20	CW2008X-2X10	0.709(18.00)	1.028(26.10)	1.071(27.20)
22	CW2008X-2X11	0.787(20.00)	1.106(28.10)	1.150(29.20)
24	CW2008X-2X12	0.866(22.00)	1.185(30.10)	1.228(31.20)
26	CW2008X-2X13	0.945(24.00)	1.254(32.10)	1.307(33.20)
28	CW2008X-2X14	1.024(26.00)	1.343(34.10)	1.386(35.20)
30	CW2008X-2X15	1.102(28.00)	1.421(36.10)	1.465(37.20)
32	CW2008X-2X16	1.181(30.00)	1.500(38.10)	1.543(39.20)
34	CW2008X-2X17	1.260(32.00)	1.579(40.10)	1.622(41.20)
36	CW2008X-2X18	1.339(34.00)	1.657(42.10)	1.701(43.20)
38	CW2008X-2X19	1.417(36.00)	1.736(44.10)	1.780(45.20)
40	CW2008X-2X20	1.496(38.00)	1.815(46.10)	1.859(47.20)
44	CW2008X-2X22	1.654(42.00)	1.972(50.10)	2.016(51.20)
48	CW2008X-2X24	1.811(46.00)	2.130(54.10)	2.173(55.20)
50	CW2008X-2X25	1.890(48.00)	2.209(56.10)	2.252(57.20)
54	CW2008X-2X27	2.047(52.00)	2.366(60.10)	2.409(61.20)
56	CW2008X-2X28	2.126(54.00)	2.445(62.10)	2.488(63.20)
60	CW2008X-2X30	2.283(56.00)	2.602(66.10)	2.646(67.20)
62	CW2008X-2X31	2.362(60.00)	2.681(68.10)	2.724(69.20)
64	CW2008X-2X32	2.441(62.00)	2.780(70.10)	2.803(71.20)
68	CW2008X-2X34	2.598(66.00)	2.917(74.10)	2.961(75.20)