

.165"(4.20mm) pitch panel mount Power connectors



P/N: CH4204-2xXXW0

Poles: 2~24

MATERIAL:

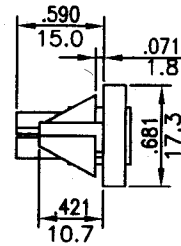
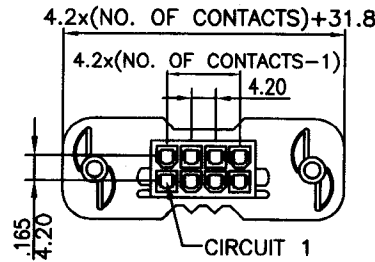
* Housing: Nylon 66 UL 94V-0 White

FEATURES:

- * Available in 2 thru 24 circuits
- * Current rating: 8A mps Max
- * Voltage rating: 500V/AC (R.M.S.)
- * Mates with CH4205-XX plug, and CW4203R-XX, W4240D-XX
- * Use with CT4201T series crimp terminals

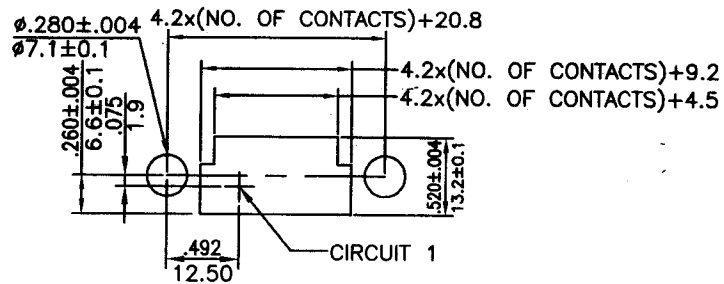
ELECTRICAL:

- * Withstand voltage: 1,500V AC for 60 seconds
- * Insulation Resistance: 1,000MΩ min.
- * Contact Resistance: 10MΩ max.
- * Storing Temperature Range: -40°C~+105°C
- * Temperature Rise: 30°C Max
(Carrying rated current load)



inches
mm

PCB CUTOUT
PANEL THICKNESS 1.27±0.3



.165"(4.20mm) pitch crimp terminal

P/N: CT4201T

* Material: Brass

* Finished: Tin-plated

* Used in CH4201, CH4204

CH4257 series housings

* Wire Range: CT4201T: AWG#18~22

CT4201HT: AWG#16~18

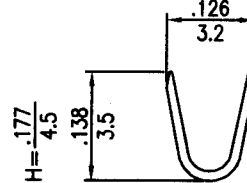
* Insulation O.D.: 2.80mm(max)

* Thickness: 0.20mm

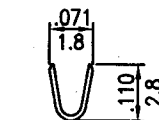
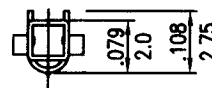
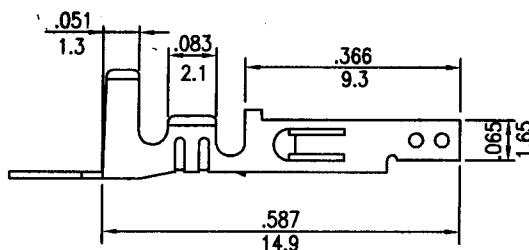
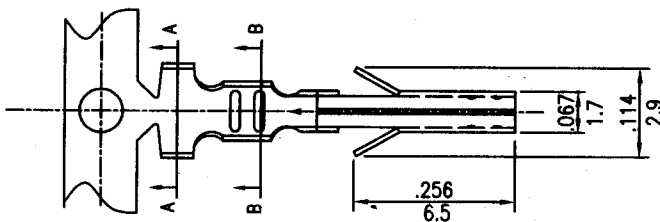
* Q'TY: 5,000 pcs/reel

inches
mm

H = .142
3.6



A-A SECTION



B-B SECTION