

# .156"(3.96mm) pitch Wire to Board Connectors



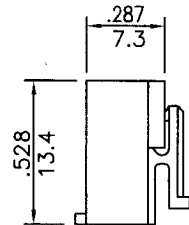
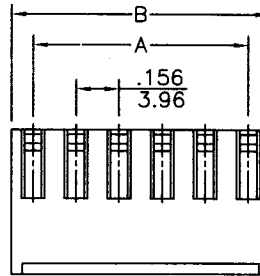
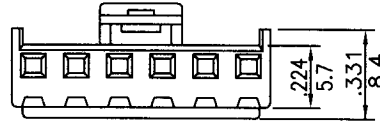
## CH3962 Series

- \* Poles:2-14
- \* Material:NYLON 66 UL94V-0 White
- \* Suitable CT3962T series terminal
- \* Mates with CW3962X-XX series Header

inches  
mm

## Specifications

- \* Current rating: 5A AC, DC
- \* Voltage rating: 250V AC, DC
- \* Temperature range: -25°C~+105°C
- \* Insulation resistance: 1,000MΩ min.
- \* Withstand voltage: 1,500V AC/minute



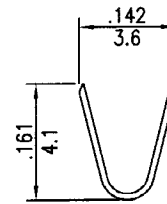
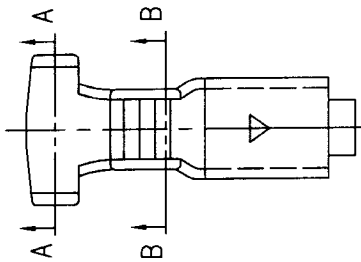
CIRCUITS	PART NO.	DIMENSION in.(mm)		CIRCUITS	PART NO.	DIMENSION in.(mm)	
		A	B			A	B
2	CH3962-02	0.156(3.96)	0.319(8.1)	9	CH3962-09	1.247(31.68)	1.410(35.82)
3	CH3962-03	0.312(7.92)	0.475(12.06)	10	CH3962-10	1.403(35.64)	1.566(39.78)
4	CH3962-04	0.468(11.88)	0.631(16.02)	11	CH3962-11	1.559(39.60)	1.722(43.74)
5	CH3962-05	0.624(15.84)	0.787(19.98)	12	CH3962-12	1.715(43.56)	1.878(47.70)
6	CH3962-06	0.780(19.80)	0.942(23.94)	13	CH3962-13	1.871(47.52)	2.034(51.66)
7	CH3962-07	0.935(23.76)	1.098(27.90)	14	CH3962-14	2.027(51.48)	2.190(55.62)
8	CH3962-08	1.091(27.72)	1.254(31.86)				

# .156"(3.96mm) pitch crimp terminal

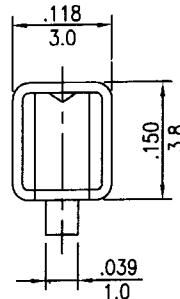
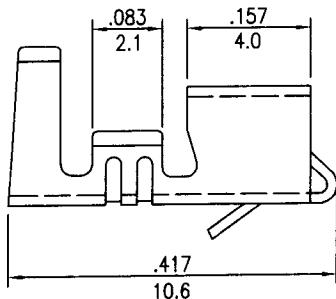
## CT3962T Series

- \* Material:Brass
- \* Finished:Tin-plated
- \* Used in CH3962 series housings
- \* Wire range:AWG#18~#24
- \* Insulation O.D:2.80mm(max)
- \* Thickness:0.25mm
- \* Q'TY:4,000pcs/reel

inches  
mm



A-A SECTION



B-B SECTION