

# .100"(2.54mm) pitch Wire to Board Connectors



## CH330 Series

- \* Poles :2\*2~2\*40
- \* Material : NORYL UL 94V-1 BLACK
- \* Suitable CT328X or CT328B series terminal
- \* Mates with CH330 FOR W330X series header  
CH330A series FOR CW2545 series header

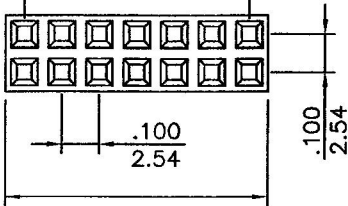
P/N : CK328X  
Polarizing Plug

## Specifications

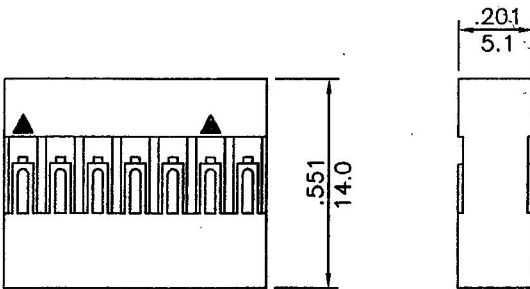
- \* Current rating : 3A AC, DC
- \* Voltage rating : 250V AC, DC
- \* Temperature range : -25°C~+85°C
- \* Insulation resistance : 1,000M Ω min.
- \* Withstand voltage : 800V AC/minute

P/N : CH330-2xXX

2.54x(NO. OF CONTACTS-1)

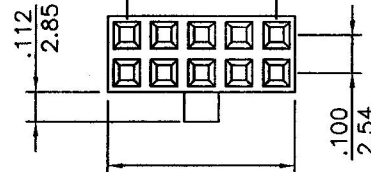


2.54x(NO. OF CONTACTS)

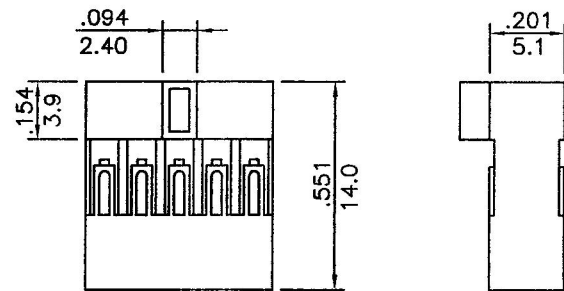


P/N : CH330A-2xXX

2.54x(NO. OF CONTACTS-1)



2.54x(NO. OF CONTACTS)

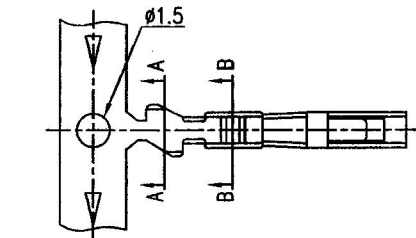


inches  
mm

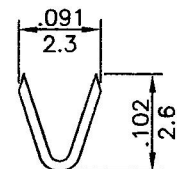
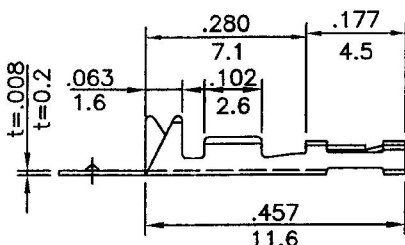
# .100"(2.54mm) pitch crimp terminal

## CT328 Series

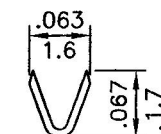
- \* Material : Brass
- \* Finished : Tin plated or gold plated
- \* Used in CH328, CH330 series housings
- \* Wire range : AWG#22~#28
- \* Insulation O.D : 1.70mm(max)
- \* Thickness : 0.2mm
- \* Q'TY:10,000pcs/reel



inches  
mm



A-A SECTION



B-B SECTION

