

.118"(3.0mm) Pitch Dual row Wire-to-Wire Connectors



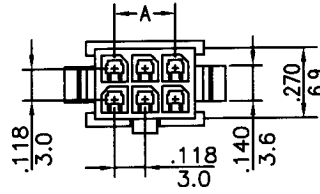
CH3020 Series

- * Poles:2-24
- * Material:Polyester, UL94V-0
- * Suitable CT3020 series terminal
- * Mates with CH3025 series

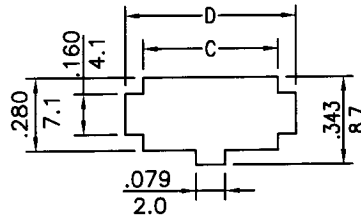
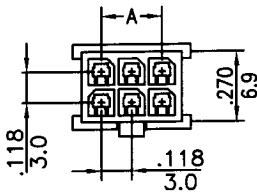
Specifications

- * Current rating: 3A AC, DC
- * Voltage rating: 250V AC, DC
- * Temperature range: -25°C~+85°C
- * Insulation resistance: 1,000MΩ min.
- * Withstand voltage: 1,500V AC/minute

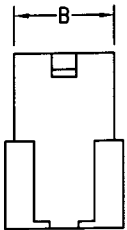
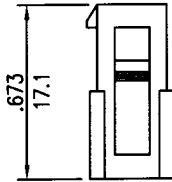
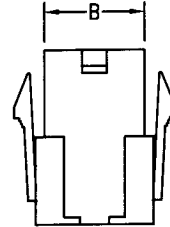
inches
mm



CH3020N SERIES



panel hole dimensions



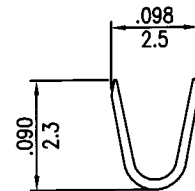
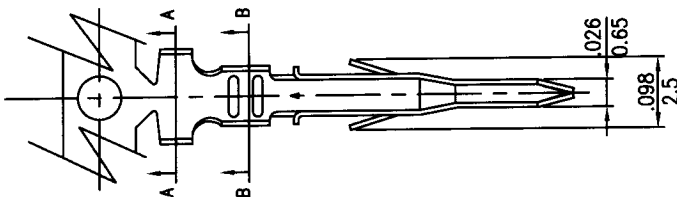
CIRCUITS	PART NO.	DIMENSION in.(mm)			
		A	B	C	D
2	CH3020-2X1		0.150(3.8)	0.165(4.2)	0.311(7.9)
4	CH3020-2X2	0.118(3.0)	0.268(6.8)	0.283(7.2)	0.429(10.9)
6	CH3020-2X3	0.236(6.0)	0.386(9.8)	0.402(10.2)	0.547(13.9)
8	CH3020-2X4	0.354(9.0)	0.504(12.8)	0.520(13.2)	0.666(16.9)
10	CH3020-2X5	0.472(12.0)	0.622(15.8)	0.638(16.2)	0.784(19.9)
12	CH3020-2X6	0.591(15.0)	0.740(18.8)	0.756(19.2)	0.902(22.9)
14	CH3020-2X7	0.709(18.0)	0.858(21.8)	0.874(22.2)	1.020(25.9)
16	CH3020-2X8	0.827(21.0)	0.976(24.8)	0.992(25.2)	1.138(28.9)
18	CH3020-2X9	0.945(24.0)	1.094(27.8)	1.110(28.2)	1.256(31.9)
20	CH3020-2X10	1.063(27.0)	1.213(30.8)	1.228(31.2)	1.374(34.9)
22	CH3020-2X11	1.181(30.0)	1.331(33.8)	1.346(34.2)	1.492(37.9)
24	CH3020-2X12	1.299(33.0)	1.449(36.8)	1.464(37.2)	1.610(40.9)

.118"(3.0mm) pitch crimp terminal

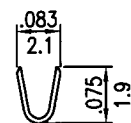
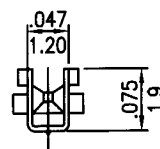
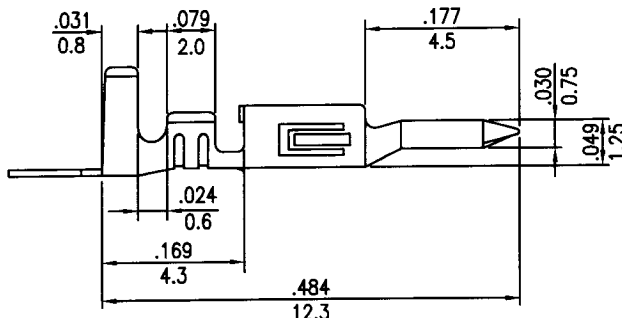
CT3020 Series

- * Material:Phosphor bronze
- * Finished:Tin-plated 60u"
- * Used in CH3020 series housings
- * Wire range:AWG#22~#28
- * Thickness:0.20mm
- * Q'TY:10,000pcs/reel

inches
mm



A-A SECTION



B-B SECTION