

.100"(2.54mm) pitch Wire to Board Connectors



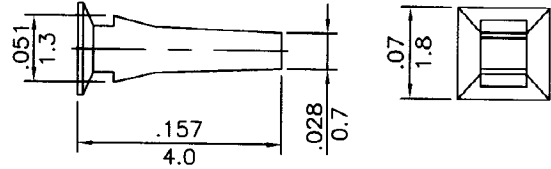
CH2545 Series

- * Poles: 2*2~2*40
- * Material : PBTP UL94V-0, BLACK
- * Suitable CT2543T series terminal
- * Mates with CW330, CW2545 series Box Header

P/N : CK328X
Polarizing Plug

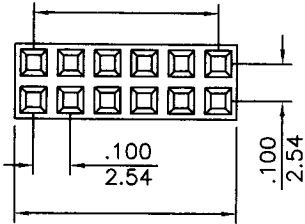
Specifications

- * Current rating : 3A AC, DC
- * Voltage rating : 250V AC, DC
- * Temperature range : -25°C~+85°C
- * Insulation resistance : 1,000MΩ min.
- * Withstand voltage : 1,000AC/minute

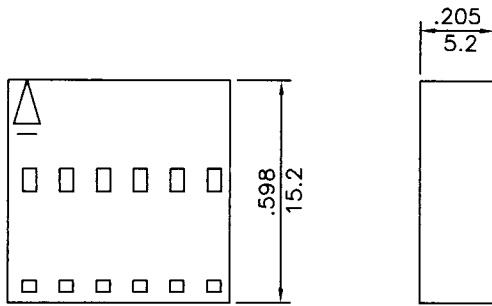


P/N : CH2545-2xXX

(NO. OF CONTACTS-1)X2.54

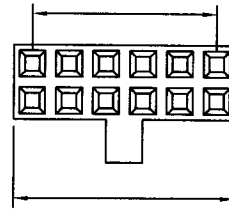


(NO. OF CONTACTS)X2.54+0.2

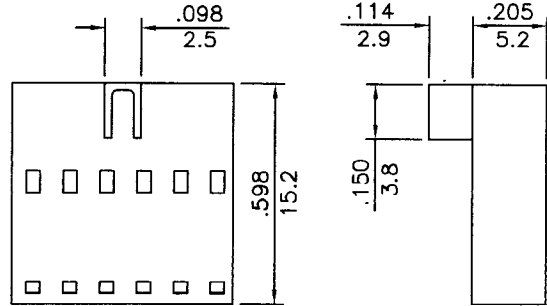


P/N : CH2545A-2xXX

(NO. OF CONTACTS-1)X2.54



(NO. OF CONTACTS)X2.54+0.2

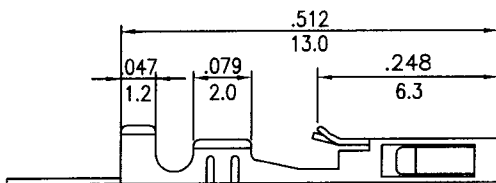
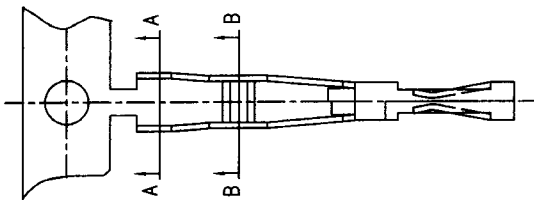


inches
mm

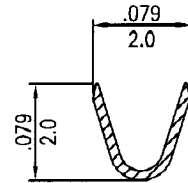
.100"(2.54mm) pitch crimp terminal

CT2543T Series

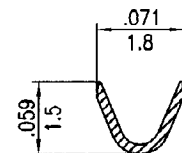
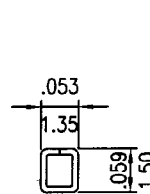
- * Material: Phos bronze
- * Finished: Tin-plated
- * Used in CH2543, CH2543B, CH2543C, CH2545, CH2545A series housings
- * Wire range: AWG#24~#28
- * Insulation O.D: 1.60mm(max)
- * Thickness: 0.2mm
- * Q'TY: 15,000 pcs/reel



inches
mm



A-A SECTION



B-B SECTION