

# .100"(2.54mm) pitch Wire to Board Connectors



## CH251 Series

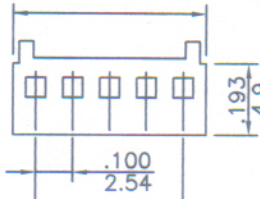
- \* Poles:2-20
- \* Material:NYLON 66 UL 94V-2
- \* Suitable CT251T series terminal
- \* Mates with CW251 series wafer

## Specifications

- \* Current rating: 3A AC, DC
- \* Voltage rating: 250V AC, DC
- \* Temperature range: -25°C~+85°C
- \* Insulation resistance: 1,000MΩ min.
- \* Withstand voltage: 1,000AC/minute

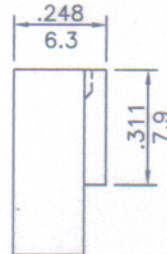
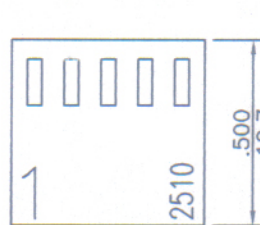
P/N: CH251-XX

2.54X(NO. OF CONTACT)+0.6

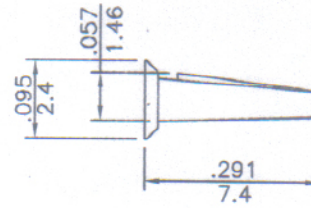


inches  
mm

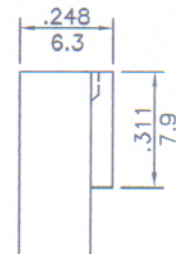
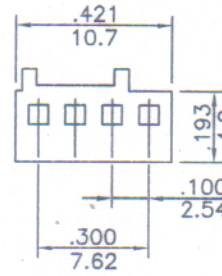
2.54X(NO. OF CONTACT-1)



P/N: CK251  
Housing polarizing key



P/N: CH251C-04

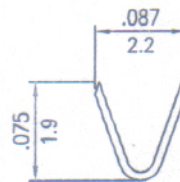
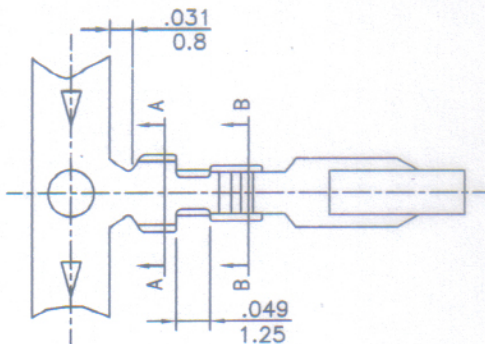


# .100"(2.54mm) pitch crimp terminal

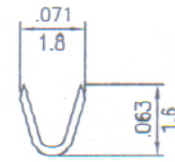
## CT251 Series

- \* Material:Brass
- \* Finished:Tin-plated
- \* Used in CH251, CH251Z series housings
- \* Wire range:AWG#22~#28
- \* Insulation O.D:1.50mm(max)
- \* Thickness:0.2mm
- \* Q'TY:10,000pcs/reel

inches  
mm



A-A SECTION



B-B SECTION

