

.079"(2.00mm) pitch Wire to Board Housing

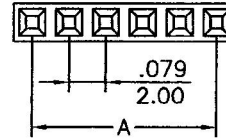


CH205-XX Series

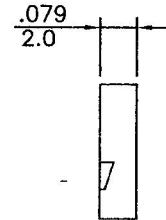
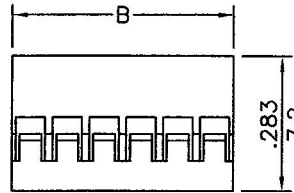
- * Poles:2-20
- * Material:NYLON 66UL94V-2 BLACK
- * Suitable CT204XGF series terminal
- * Mates with W201X-XX series Header

Specifications

- * Current rating: 1A AC, DC
- * Voltage rating: 250V AC, DC
- * Temperature range: -25°C~+85°C
- * Insulation resistance: 1,000MΩ min.
- * Withstand voltage: 800V AC/minute



inches
mm



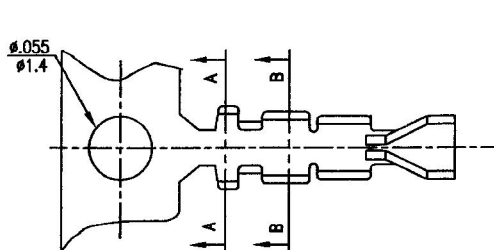
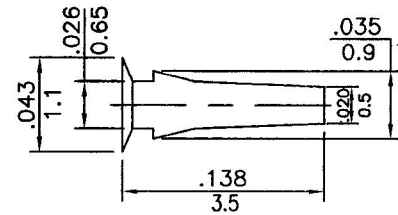
CKTS	PART NO.	DIM. "A"	DIM. "B"	CKTS	PART NO.	DIM. "A"	DIM. "B"
2	CH205-02	0.079(2.00)	0.169(4.3)	11	CH205-11	0.787(20.00)	0.878(22.3)
3	CH205-03	0.157(4.00)	0.248(6.3)	12	CH205-12	0.866(22.00)	0.957(24.3)
4	CH205-04	0.236(6.00)	0.327(8.3)	13	CH205-13	0.945(24.00)	1.035(26.3)
5	CH205-05	0.315(8.00)	0.406(10.3)	14	CH205-14	1.024(26.00)	1.114(28.3)
6	CH205-06	0.394(10.00)	0.484(12.3)	15	CH205-15	1.102(28.00)	1.193(30.3)
7	CH205-07	0.472(12.00)	0.563(14.3)	16	CH205-16	1.181(30.00)	1.272(32.3)
8	CH205-08	0.551(14.00)	0.642(16.3)	17	CH205-17	1.260(32.00)	1.350(34.3)
9	CH205-09	0.630(16.00)	0.720(18.3)	18	CH205-18	1.339(34.00)	1.429(36.3)
10	CH205-10	0.709(18.00)	0.799(20.3)	20	CH205-20	1.496(38.00)	1.587(40.3)

.079"(2.00mm) pitch crimp terminal

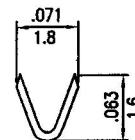
CT204AGF, CT204LGF Series

- * Material:Phos bronze
- * Finished:Gold flash plated
- * Used in CH204,CH204C,CH205 series housings
- * Mating Specification: CT204AGF: 2P~20P(2X2P~2X10P)
CT204LGF: 21~40P(2X11P~2X40P)
- * Wire range:AWG#26~#30
- * Insulation O.D:1.35mm(max)
- * Thickness:0.2mm
- * Q'TY:10,000pcs/reel

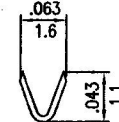
P/N : CK201X
Polarizing Plug



inches
mm



A-A SECTION



B-B SECTION

