

.079"(2.00mm) pitch Wire to Board Housing

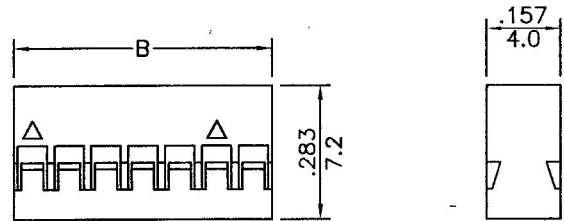
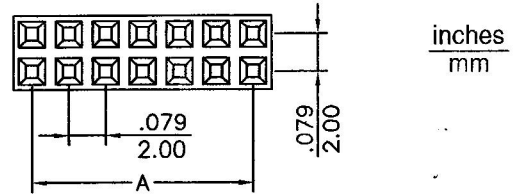


CH204-2xXX Series

- * Poles: 04~80
- * Material: NYLON 66UL94V-2 BLACK
- * Suitable CT204XGF series terminal
- * Mates with W202X-XX series Pin Header

Specifications

- * Current rating: 1A AC, DC
- * Voltage rating: 250V AC, DC
- * Temperature range: -25°C~+85°C
- * Insulation resistance: 1,000MΩ min.
- * Withstand voltage: 800V AC/minute



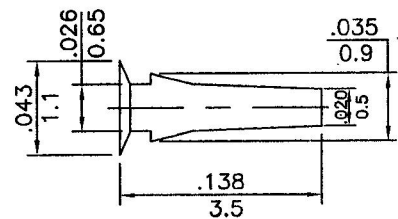
CKTS	PART NO.	DIM. "A"	DIM. "B"	CKTS	PART NO.	DIM. "A"	DIM. "B"
4	CH204-2X2	0.079(2.00)	0.165(4.2)	30	CH204-2X15	1.102(28.00)	1.189(30.2)
6	CH204-2X3	0.157(4.00)	0.244(6.2)	32	CH204-2X16	1.181(30.00)	1.268(32.2)
8	CH204-2X4	0.236(6.00)	0.323(8.2)	34	CH204-2X17	1.260(32.00)	1.346(34.2)
10	CH204-2X5	0.315(8.00)	0.402(10.2)	36	CH204-2X18	1.339(34.00)	1.425(36.2)
12	CH204-2X6	0.394(10.00)	0.480(12.2)	38	CH204-2X19	1.418(36.00)	1.504(38.2)
14	CH204-2X7	0.472(12.00)	0.559(14.2)	40	CH204-2X20	1.496(38.00)	1.583(40.2)
16	CH204-2X8	0.551(14.00)	0.638(16.2)	42	CH204-2X21	1.575(40.00)	1.661(42.2)
18	CH204-2X9	0.630(16.00)	0.717(18.2)	44	CH204-2X22	1.654(42.00)	1.740(44.2)
20	CH204-2X10	0.709(18.00)	0.795(20.2)	46	CH204-2X23	1.732(44.00)	1.819(46.2)
22	CH204-2X11	0.787(20.00)	0.874(22.2)	48	CH204-2X24	1.800(46.00)	1.898(48.2)
24	CH204-2X12	0.866(22.00)	0.953(24.2)	50	CH204-2X25	1.890(48.00)	1.976(50.2)
26	CH204-2X13	0.945(24.00)	1.031(26.2)	60	CH204-2X30	2.283(58.00)	2.370(60.2)
28	CH204-2X14	1.024(26.00)	1.110(28.2)	80	CH204-2X40	3.071(78.00)	3.157(80.2)

.079"(2.00mm) pitch crimp terminal

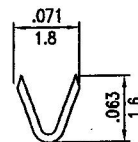
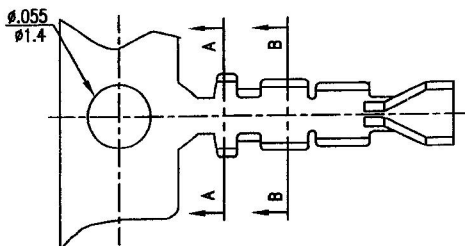
CT204AGF, CT204LGF Series

- * Material: Phos bronze
- * Finished: Gold flash plated
- * Used in CH204, CH204C, CH205 series housings
- * Mating Specification: CT204AGF: 2P~20P(2X2P~2X10P)
CT204LGF: 21P~40P(2X11P~2X40P)
- * Wire range: AWG#26~#30
- * Insulation O.D: 1.35mm(max)
- * Thickness: 0.2mm
- * Q'TY: 10,000pcs/reel

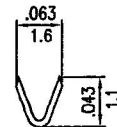
P/N : CK201X
Polarizing Plug



inches
mm



A-A SECTION



B-B SECTION

