

.079"(2.00mm) pitch Wire to Board Housing

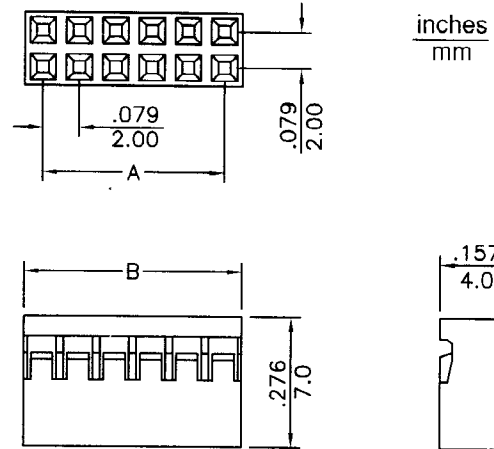


CH202 Series

- * Poles:4-50
- * Material:NORYL UL 94-V1 BLACK
- * Suitable CT201GF series terminal
- * Mates with CW202X-XX series Pin Header

Specifications

- * Current rating: 1A AC, DC
- * Voltage rating: 100V AC, DC
- * Temperature range: -25°C~+85°C
- * Insulation resistance: 1,000MΩ min.
- * Withstand voltage: 800V AC/minute



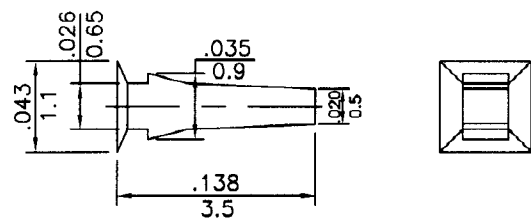
CIRCUITS	PART NO.	DIMENSION in.(mm)		CIRCUITS	PART NO.	DIMENSION in.(mm)	
		A	B			A	B
4	CH202-2X2	0.079(2.00)	0.165(4.2)	28	CH202-2X14	1.024(26.00)	1.110(28.2)
6	CH202-2X3	0.157(4.00)	0.244(6.2)	30	CH202-2X15	1.102(28.00)	1.189(30.2)
8	CH202-2X4	0.236(6.00)	0.323(8.2)	32	CH202-2X16	1.181(30.00)	1.268(32.2)
10	CH202-2X5	0.315(8.00)	0.402(10.2)	34	CH202-2X17	1.260(32.00)	1.346(34.2)
12	CH202-2X6	0.394(10.00)	0.480(12.2)	36	CH202-2X18	1.339(34.00)	1.425(36.2)
14	CH202-2X7	0.472(12.00)	0.559(14.2)	38	CH202-2X19	1.418(36.00)	1.504(38.2)
16	CH202-2X8	0.551(14.00)	0.638(16.2)	40	CH202-2X20	1.496(38.00)	1.583(40.2)
18	CH202-2X9	0.630(16.00)	0.717(18.2)	42	CH202-2X21	1.575(40.00)	1.661(42.2)
20	CH202-2X10	0.709(18.00)	0.795(20.2)	44	CH202-2X22	1.654(42.00)	1.740(44.2)
22	CH202-2X11	0.787(20.00)	0.874(22.2)	46	CH202-2X23	1.732(44.00)	1.819(46.2)
24	CH202-2X12	0.866(22.00)	0.953(24.2)	48	CH202-2X24	1.800(46.00)	1.898(48.2)
26	CH202-2X13	0.945(24.00)	1.031(26.2)	50	CH202-2X25	1.890(48.00)	1.976(50.2)

.079"(2.00mm) pitch crimp terminal

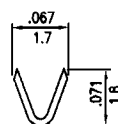
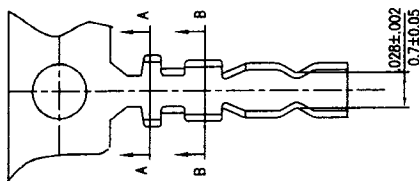
CT201GF Series

- * Material:Brass
- * Finished:Gold-plated/Gold flash
- * Used in CH201 CH202 series housings
- * Wire range:AWG#26~#30
- * Insulation O.D:1.35mm(max)
- * Thickness:0.2mm
- * Q'TY:10,000pcs/reel

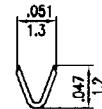
Polarizing Plug



P/N : CK201X



A-A SECTION



B-B SECTION

