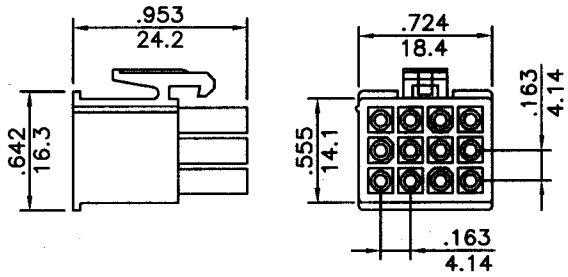


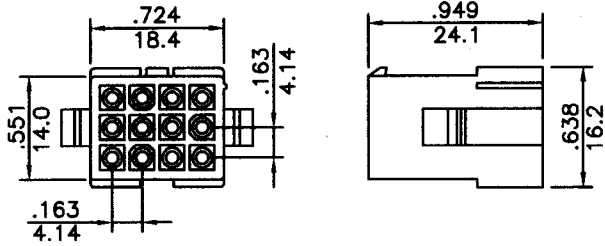
# .163"(4.14mm) pitch wire to wire system



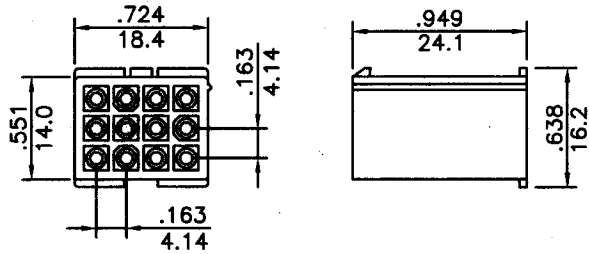
P/N: H66A5-12



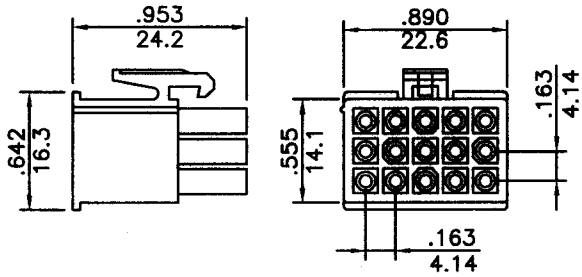
P/N: H66A6E-12



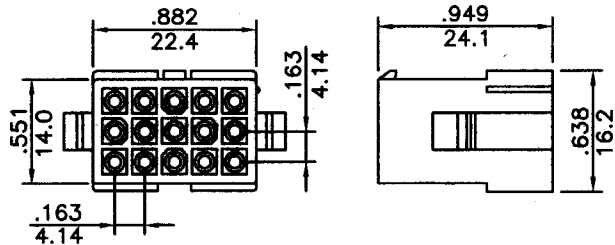
P/N: H66A6-12



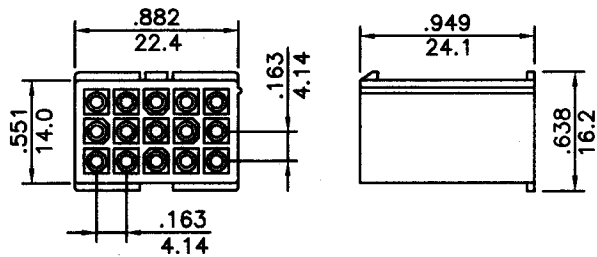
P/N: H66A5-15



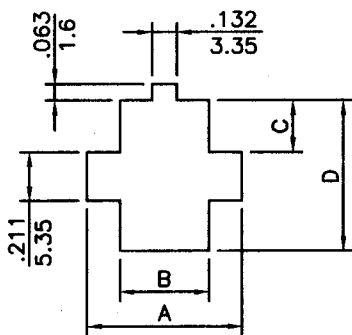
P/N: H66A6E-15



P/N: H66A6-15



**Panel Hole DIM.**



inches  
mm

CKTS	Panel Hole DIM.in.(mm)			
	"A"	"B"	"C"	"D"
2	0.421(10.70)	0.242(6.15)	0.098(2.50)	0.407(10.35)
3	0.421(10.70)	0.242(6.15)	0.181(4.60)	0.573(14.55)
4	0.587(14.90)	0.407(10.35)	0.098(2.50)	0.407(10.35)
6	0.752(19.10)	0.573(14.55)	0.098(2.50)	0.407(10.35)
9	0.752(19.10)	0.573(14.55)	0.181(4.60)	0.573(14.55)
12	0.787(20.00)	0.738(18.75)	0.181(4.60)	0.573(14.55)
15	1.083(27.50)	0.904(22.95)	0.181(4.60)	0.573(14.55)